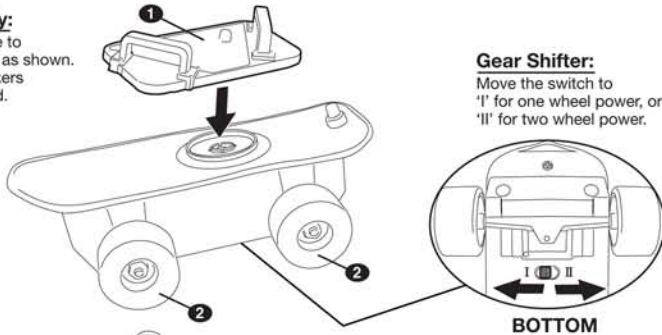


nickelodeon™ TEENAGE MUTANT NINJA TURTLES™

SEWER SPINNIN' SKATEBOARD WITH BONUS STUNT RAMP

Assembly:

Attach base to skateboard as shown. Attach stickers as indicated.



Gear Shifter:
Move the switch to 'I' for one wheel power, or 'II' for two wheel power.

To Rev Up:

Grab skateboard and push forward with all four wheels on a safe surface to rev up, lift up the skateboard off surface. Rev up 4 times in a row is designed to produce maximum power. Skateboard works best on hard flat surfaces.

Important: Keep fingers away from rotating rear wheels.

Front Side Ollie:

Set 'II' wheel power. Position the figure and base on the skateboard as shown below. Rev up (push forward) 1 time. (slow power) Release skateboard softly on all four wheels aiming straight at stunt ramp.

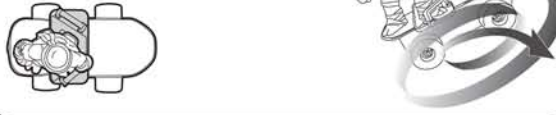


Not all figures will perform all tricks as shown. Figure not included. For more detailed instruction information visit www.Playmatestoy.com

©2012 Viacom International Inc. All Rights Reserved. TEENAGE MUTANT NINJA TURTLES and all related titles, logos and characters are trademarks of Viacom International Inc.
©2012 Viacom Overseas Holdings C.V. All Rights Reserved.
TEENAGE MUTANT NINJA TURTLES and all related titles, logos and characters are trademarks of Viacom Overseas Holdings C.V.
© 2012 Playmates Toys Inc. Distributed by Playmates Toys Inc. 909 N. Sepulveda Blvd., Suite 800, El Segundo, CA 90245.
PRINTED IN CHINA.

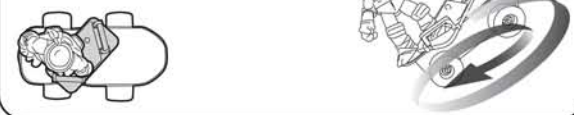
360° Power Wheelie N' Roll:

Set 'I' wheel power. Position the figure and base on the skateboard as shown below. Rev up (power) 1 time. (slow power) Release skateboard onto the back two wheels.



360°:

Set 'I' wheel power. Position the figure and base on the skateboard as shown below. Rev up (power) 1 time. (slow power) Release skateboard onto the back two wheels.



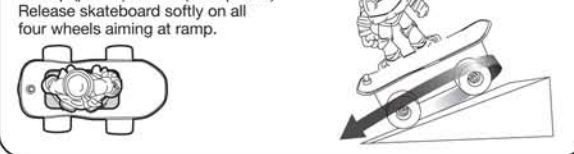
Wall Wack Power Wheelie:

Set 'I' wheel power. Position the figure and base on the skateboard as shown below. Rev up (power) 2 times. (medium power) Release skateboard softly on all four wheels aiming at a safe wall to hit.



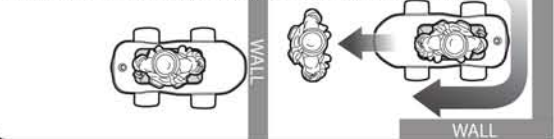
Kick Turn At Lip:

Set 'I' wheel power. Position the figure and base on the skateboard as shown below. Rev up (power) 1 time. (slow power) Release skateboard softly on all four wheels aiming at ramp.



Double Wall Wack Attack:

Position a bad guy close to a corner. Set 'I' wheel power. Position the figure and base on the skateboard as shown below. Rev up (power) 4 times. (maximum power) Release skateboard softly on all four wheels aiming at a safe corner. It may take some practice or repositioning to attack the bad guy.



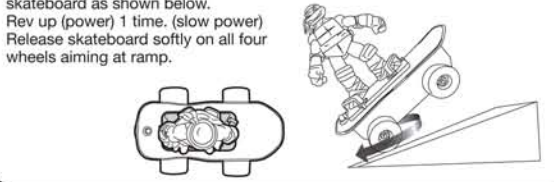
Wall Wack 180°:

Set 'I' wheel power. Position the figure and base on the skateboard as shown below. Rev up (power) 3 times. (strong fast power) Release skateboard softly on all four wheels aiming at safe wall to hit.



Mid Ramp Kick Turn:

Set 'I' wheel power. Position the figure and base on the skateboard as shown below. Rev up (power) 1 time. (slow power) Release skateboard softly on all four wheels aiming at ramp.



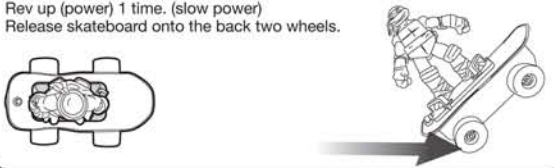
Power Wheelie N' Roll:

Set 'II' wheel power. Position the figure and base on the skateboard as shown below. Rev up (power) 1 time. (slow power) Release skateboard quickly on back two wheels tilted at an angle.



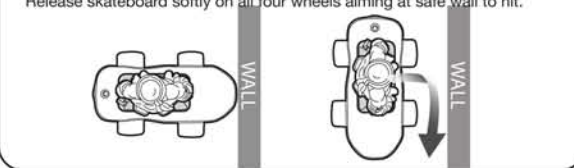
Manual:

Set 'II' wheel power. Position the figure and base on the skateboard as shown below. Rev up (power) 1 time. (slow power) Release skateboard onto the back two wheels.



Wall Wack & Turn:

Set 'I' wheel power. Position the figure and base on the skateboard as shown below. Rev up (power) 2 times. (medium power) Release skateboard softly on all four wheels aiming at safe wall to hit.



Ages 4 and up
Asst. #94050
Item #94051

Playmates
TOYS